



*Learn to Love, Love to Learn*

## St. Mary's on the Hill P.S. January Information 2025



---

*Welcome to January's Information Sway. I would like to begin by wishing everyone a very happy and prosperous new year.*

*As we move into the new year there will be a variety of opportunities for our children to participate in and we are confident they will continue to engage in these with enthusiasm. The New Year is always an opportunity for us to begin again and look forward to a fresh start. We hope that we can continue to work together in partnership for the benefit of all the children.*

*As we move through the winter months more ailments such as flus, colds and even COVID can become more prevalent. Please look for these in your child and if your child is unwell please do not send them into school.*

*If you have any queries please send a message to the school email address given below. [info@stmarys.newtownabbey.ni.sch.uk](mailto:info@stmarys.newtownabbey.ni.sch.uk)*

*Mr. Matthew O'Brien, Principal*

---

## Open Enrolment Timetable - September 2025



---

*P1 Admissions Portal*

***Friday 10 January 2025 Primary One application procedure opens with online portal available until Friday 24 January 2025 at 12 noon***

*Date/time by which parents submit an application and documents\* in support of their application (treated as punctual).*

*An application received after 12 noon on 24 January 2025 up to 29 January 2025 will be treated as late.*

*Applicants will be guided after the Online Portal closes on how to complete a late application.*

*Please use the following link to access the Education Authority website.*

<https://www.eani.org.uk/parents/admissions>

---

## Promoting Internet Safety



---

*As part of our ongoing proactive approach to Internet Safety and the use of digital technologies we would like to draw your attention to the following.*

*After Christmas, we usually have a greater number of pupils regularly accessing WhatsApp/Social Media. Please be aware that these are AGE RESTRICTED and should NOT be used by primary school pupils. It is the responsibility of the parents/carers to be fully aware of what their child is doing 'online.'*

---

---

*In order to keep your child safe online and help protect them from online bullying we would suggest the following:*

- Agree you have access to their phone and you check this regularly each week;*
- Make sure you know what apps they are using (age appropriate);*
- Monitor calls, messages, contacts, web-sites and pictures;*
- No pupil in primary school needs their phone in their bedroom at night;*
- At all times talk to your child regarding the dangers of social media.*

*In school we will continue to address the use of the internet and social media forums through ICT lessons, PDMU lessons, Assemblies, the Religion Programme and various other avenues. Despite this we find that many of the issues and difficulties which children face emanate from these sources. The use of social media and the internet is certainly a huge challenge for our pupils to manage and they can only do so with parental support, guidance and advice.*

---

## Pupils of the Month December 2024



---

*Congratulations to all our wonderful Pupils of the Month for December. They have worked so hard and we are very proud of them all.*

---

Class	Name	Name
P1MMCM	Emmet Foy	Ella Coulter
P1KR	Freddie Rainey	Ella Egan
P2PM	Erin Downey	Maria Lesniak
P2SK	Grace McArdle	Katie McFarland
P3MM	Liam Hughes	Annie Prendergast
P3SR	Caiden Cairns	Corrin Elliot
P4MMcA	Anaya Abubakar	Zian Nabusan and Isla Ross
P4RT	Salvatore Mancuso	Olivia Jablonskaite
P5MD	Ava Bellamy	Enda McCann
P5WW	Issy Mc Farlane	Thomas Mc Coey
P6SMCC	Lennon Ross	Daniel Ma Aleer and Anna Makin
P6GB	Laurn O'Kane	Jacob Olver
P7MOB	Aidan Hayes	Mya McKay
P7JK	Cara Dunlop	Rose Cairns

## Principal's Award Term 1




---

*The term 1 St. Mary's on the Hill P.S. Principal's Awards were given out before Christmas. This Award is given to those pupils who have displayed hard work, very good behaviour and qualities such as kindness, care, compassion and a great attitude throughout the entire first term. As well as having an excellent attitude towards school. We are extremely proud of all pupils who have received this award.*

---

Class	Name of child	Reason for Award
Mr McEvoy's Class	Alfie Kelly	Being a great worker and having a fantastic attitude to school every day. Well done Alfie
Miss McNamee's Class	Michael Molloy	Michael has worked really hard this month on his schoolwork. I am especially proud of all the progress he has made in his reading and how much his confidence is growing.
P1KR	Darragh Jones	Darragh is a lovely, gentle and happy boy. He is a great friend to others and always wants to help. Darragh always tries his best!
P1MMC	Katie Clayton	Katie tries her best in all that she does. She is a lovely friend to everyone in our class, has beautiful manners and always thinks of others.
P2SK	Hollie Caskey	Hollie is a gentle, kind and caring girl. She has made excellent progress this year. Hollie comes to school every day with a beautiful smile on her face. She is a great friend to others and loves to lend a helping hand.
P2NMN	Conan McDade	Conan has worked so hard during term 1. He has settled incredibly well into P2 and has made a fantastic effort to follow the class rules, complete his work and maintain a positive attitude. Conan has an infectious smile and has displayed wonderful manners to both children and staff.
P3MM	Sophia O'Neill	Sophia has applied herself to her work so well since settling in P3. She is fully engaged in each task and always strives to produce her best work.

P3SR	Erin Devlin	Erin is an extremely hard working girl who always tries her best. She is thoughtful and patient and sets a great example for her peers. She has a positive attitude to school and everything she does. Erin has a lovely sense of humour and is an amazing friend.
P4RT	Gabriella McManus	Gabriella is a fabulous girl with a fantastic attitude to school. She is an excellent role model. She has been a shining example of how we can achieve every single behaviour target we have looked at with our class.
P4MMA	Lucy Wilkinson	Lucy is a kind and caring member of our class. She treats her classmates and adults around the school with the same manners and respect. She is a brilliant role model to others with her positive attitude and hard working nature.
P5MD	Khadine Masterson	Khadine is a fantastic role model. A kind friend to all who is always on task. She has lovely manners and contributes great ideas to our class discussions.
P5WW	Sonny Briers	Sonny has worked very hard this term and has made excellent progress. His positive attitude sets a great example to all those around him.
P6GB	Christopher McArdle	Christopher is a very hardworking boy who has a wonderful attitude to school. He always tries his very best. He shows wonderful manners and treats everyone with respect and kindness.
P6SMC	Grace Kelly	Grace is a quiet child who comes to school with a wonderful attitude. She consistently works hard in class and tries her best. She is a fantastic helper and especially helps others with ICT skills. Grace is a pleasure to teach.

P7MOB	Evie Wagstaff	Evie is an enthusiastic and hard-working student. She has come into Primary 7 with a brilliant attitude to everything that she does. She is a brilliant role model to her class peers and also the younger children in the school. She is so deserving of this award and we are very proud of her!
P7JK	Noah Leonard	Noah is a pleasant and well mannered boy. He consistently works hard in class ensuring his work is completed to the best of his ability. He has a mature attitude towards school and is a fantastic role model to his peers and the younger children in the school. He is truly deserving of this award!

## Behaviour Targets



---

*One of the things we are proudest of in St. Mary's on the Hill is the children's behaviour. However, there is always room for improvement. In the month of January we are focusing on '**Being a Good Team Member**'. I will talk to the children at each of our assemblies regarding this and staff will reinforce the message in school. This will include speaking appropriately, sharing ideas, listening to others, showing empathy for others who have a different point of view and looking for opportunities to help other members of our team. Can we ask parents and carers to do the same at home? This is to ensure that pupils know the correct way to interact with each other.*

---



Catholic Schools Week 2025



---

*This year St Mary's on the Hill PS will celebrate Catholic Schools' Week beginning Sunday 19th January 2025. This year's theme is Alive in Christ. During this week there will be a variety of activities planned that will allow our pupils to explore their faith more fully. This is a week when we celebrate our Catholic school.*

---

Spirit of Catholic Education Award 2025



---

*It is with delight that I can announce that our school has achieved our third Spirit of Catholic Education Award. The theme 'You Are my Witness' gave our school the opportunity to showcase the fantastic work which is ongoing to support our pupils, no matter what their needs. Well done to all involved in achieving this award.*

---

## Charity Donation



---

*Thank you all for your generosity in contributing to our charities which were nominated in our first term.  
We have donated the following:*

*Developing World Group - £1,266.50. This amount was raised in lieu of staff presents and our Christmas Jumper Day.*

*A huge thank you to everyone.*

---

## After School Activities



---

*The After School Activities for term 2 will start week beginning 6th January. Along with Kidz Academy and Playsport, after school clubs of Gaelic Football and Hurling will be offered for our P5, P6 and P7 children. Please look out for more information on these through your email.*

---

# Road Safety Quiz 2025



We wish our P7 Road Safety Quiz team the best of luck on their first round outing on the 15th January.

## Inclement Weather



---

*Unfortunately, this time of year always holds the possibility of a school closure due to inclement weather. The decision to close a school is not taken lightly. As with previous years we will do all in our power to keep the school open however I do need to consider the Health and Safety implications for pupils, parents and staff. Following a risk assessment if a decision to close the school is made, we will inform every one of **the closures by text message** between 7.30am—8.30am. It is vitally important that you inform the school office of any changes to contact numbers to ensure you receive this information. Closure information will also be displayed on the school's website.*

---

## Facebook



---

*Please visit, like and share our Facebook page. It continues to be used to promote the school in the wider community. We will celebrate and mark events throughout the school year. We have over 900 followers for our page and we would really love to reach the milestone of 1000, if you have not already done so please give our page a like or a follow.*

*The school will continue to communicate and update parents via email and text. Facebook will not be used to send messages to parents and we would ask that parents do not use Facebook to contact the school.*

---

---

Click on the link below and please share with anyone you think would be interested or has a connection to our school - <https://www.facebook.com/StMarysOnTheHillPS/>

---

## Free School Meals



---

*The application process for free school meals/uniform has commenced. Parents who are currently eligible to apply for free meals/uniform should now complete their application. **Please note that entitlement to free school meals will attract funding to the school's budget.** Whether your child wishes to partake of a meal or not is down to individual choice. We would like to encourage parents who fall into this category to **please make an application** as soon as possible. Application forms may be obtained via the Education Authority website – [www.eani.org.uk](http://www.eani.org.uk) or alternatively by contacting Free School Meals Section on 028 2566 1350. Forms are also available from the school. Should you have any further queries regarding this, please contact the school office.*

---



## Car Parking



---

**CHURCH CAR PARK:** I would like to gently remind everyone of the difficulties and dangers around drop-off and collection of your child/ren. I am asking that all parents exercise extreme caution. To alleviate the difficulty of congestion we are asking all parents to make a **LEFT TURN** when exiting the car park. **Please use the designated parking spaces or drop off zone.**

---

---

**WAITING AT THE GATE:** Thank you all for your support and cooperation in the mornings whilst leaving your children to school. **We would ask parents not to wait at the gate once they have left their child to school.** By leaving your child off and moving off-site you are freeing up limited parking spaces. It can be difficult for children to enter through the gate when parents are gathered there. As the gate is in close proximity to the entrance of the car park we want to make every effort to ensure no accidents occur. We would appreciate your cooperation in this matter as the safety of our children is our primary concern. Please pass this information on to anyone who will be responsible for leaving or collecting your child.

---

## Allergy Awareness



---

*We have a number of children who suffer from allergies, which can result in potentially serious consequences. I would therefore ask that these children are not exposed to danger and that you are mindful of any children in your child's class who may have an allergy. We continue to be a Nut Free School, please do not send in anything which contains nuts.*

---

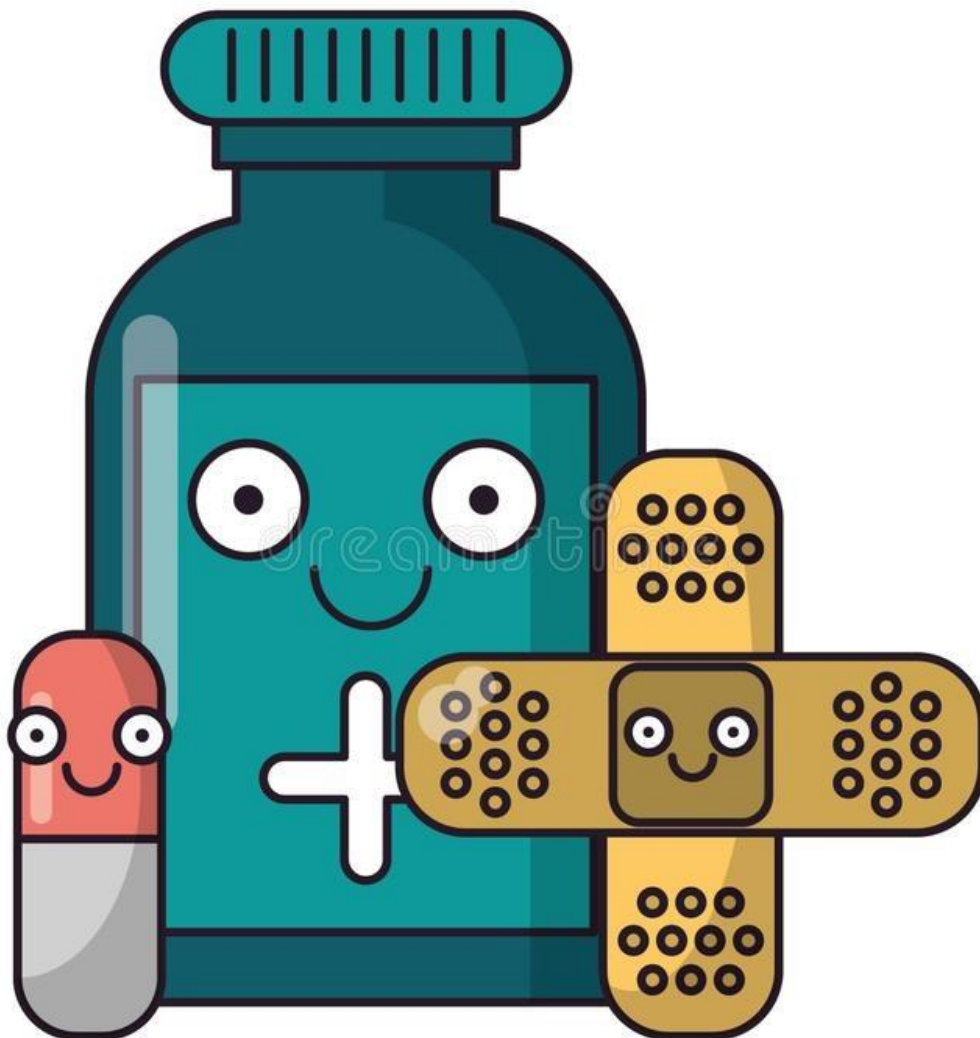
---

*Parents of children with diagnosed allergies are asked to provide the school with 2 EpiPens (with valid dates) and any other necessary medication as soon as possible.*

*Please continue to support our 'Healthy Eating Policy' and provide your child with a piece of fruit and water or milk for break.*

---

## Administration of Medicine



---

*Please visit the school office if your child requires medication to be administered whilst at school. Parents need to sign and complete an 'Administration of Medication' form (available from the school office) before the school will administer the medicine. All medication should have the child's name on it and the dosage clearly labelled. Please do not send any medication with your child – it must be handed into the school office by an adult. Thank You.*

---

## Contact Details



---

*There are some contacts in school which do not appear to be working, perhaps due to change of number or email address. If your address, telephone number or email address has changed please inform Mrs Mason in the office to ensure we have up to date information should we have a need to contact you.*

---